

Silverstone Circuit  
On June, 6 - 7

**Qualifying - 1 RESULTS**

Ord.	Nº	Entrant	Nat.	Driver	Nat.	Cat.	Cl.	Chassis	Team	Laps	Best	Time	Gap	Interval	Km/h
1	3	RP Motorsport	BRA	Vitor Baptista	BRA			Dallara F312	RP Motorsport	13	11	<b>1'53.045</b>			187.603
2	77	DAV Racing	ITA	Leonardo Pulcini	ITA	R	1º	Dallara F312	DAV Racing	11	8	<b>1'53.582</b>	0"537	0"537	186.716
3	16	RACE	JPN	Yu Kanamaru	JPN			Dallara F312	E. de Villota Motorsport	12	10	<b>1'53.600</b>	0"555	0"018	186.687
4	30	BVM Racing	ITA	Alessio Rovera	ITA	R	2º	Dallara F312	BVM Racing	11	8	<b>1'53.767</b>	0"722	0"167	186.413
5	37	RP Motorsport	POL	Igor Walilko	POL	R	3º	Dallara F312	RP Motorsport	13	9	<b>1'53.768</b>	0"723	0"001	186.411
6	15	Motul Team West-Tec F3	THA	Tanart Sathienthirakul	THA			Dallara F312	Team West-Tec F3	13	9	<b>1'53.781</b>	0"736	0"013	186.390
7	1	RP Motorsport	GTM	Andres Saravia	GTM			Dallara F312	RP Motorsport	12	9	<b>1'54.005</b>	0"960	0"224	186.023
8	6	Campos Racing	RUS	Konstantin Tereschenko	RUS			Dallara F312	Campos Racing	12	8	<b>1'54.011</b>	0"966	0"006	186.014
9	10	Motul Team West-Tec F3	ISR	Yarin Stern	ISR			Dallara F312	Team West-Tec F3	15	14	<b>1'54.062</b>	1"017	0"051	185.930
10	5	RP Motorsport	ITA	Damiano Fioravanti	ITA			Dallara F312	RP Motorsport	12	9	<b>1'54.161</b>	1"116	0"099	185.769
11	7	Campos Racing	MEX	Diego Menchaca	MEX	R	4º	Dallara F312	Campos Racing	13	11	<b>1'54.543</b>	1"498	0"382	185.150
12	4	RP Motorsport	POL	Antoni Ptak	POL	R	5º	Dallara F312	RP Motorsport	14	10	<b>1'55.034</b>	1"989	0"491	184.359
13	8	Campos Racing	BRA	Henrique Baptista	BRA			Dallara F312	Campos Racing	14	12	<b>1'55.481</b>	2"436	0"447	183.646
14	24	Corbetta Competizioni	RUS	Alexey Chuklin	RUS			Dallara F312	Corbetta Competizioni	14	11	<b>1'55.642</b>	2"597	0"161	183.390
15	9	Campos Racing	KWT	Ahmad Al Ghanem	KWT	R	6º	Dallara F312	Campos Racing	13	12	<b>1'55.662</b>	2"617	0"020	183.358
16	19	BVM Racing	COL	William Barbosa	COL			Dallara F312	BVM Racing	3	3	<b>1'55.788</b>	2"743	0"126	183.159
17	17	RACE	MEX	Jose Manuel Vilalta	MEX	R	7º	Dallara F312	E. de Villota Motorsport	14	9	<b>1'57.461</b>	4"416	1"673	180.550

Silverstone Circuit on June 06, 2015

At 10:44

**RACE DIRECTOR**

**TIMEKEEPER**



Santisima Trinidad 30 28010 MADRID  
Tel y Fax 91.448.32.06  
www.cronococa.com  
e-mail:info@cronococa.com




Juan Bravo 17 28006 MADRID  
Tel 91.432.27.50  
www.gtssport.es  
e-mail: info@gtssport.es

LAP ANALYSIS Qualifying - 1

On June, 6 - 7  
Silverstone Circuit

Number	1			3			4			5			6			7		
	Lap Time	Partial	Speed	Lap Time	Partial	Speed	Lap Time	Partial	Speed	Lap Time	Partial	Speed	Lap Time	Partial	Speed	Lap Time	Partial	Speed
1 <sup>a</sup> - 1	0'35.405	0'35.405	225.470	0'34.914	0'34.914	225.942	0'36.261	0'36.261	219.513	0'35.150	0'35.150	223.603	0'36.544	0'36.544	220.409	0'36.446	0'36.446	218.624
1 <sup>a</sup> - 2	1'27.209	0'51.804		1'26.923	0'52.009		1'28.264	0'52.003		1'25.894	0'50.744		1'27.855	0'51.311		1'28.516	0'52.070	
1 <sup>a</sup> - 3	2'03.093	0'35.884		1'59.362	0'32.439		1'59.362	0'31.098		2'03.190	0'37.296		1'59.176	0'31.321		2'01.280	0'32.764	
2 <sup>a</sup> - 1	0'34.629	0'34.629	220.409	0'34.250	0'34.250	221.312	0'36.192	0'36.192	216.868	0'34.658	0'34.658	223.141	0'34.363	0'34.363	222.681	0'34.581	0'34.581	223.141
2 <sup>a</sup> - 2	1'24.846	0'50.217		1'24.575	0'50.325		1'27.817	0'51.625		1'25.089	0'50.431		1'24.521	0'50.158		1'24.843	0'50.262	
2 <sup>a</sup> - 3	1'55.717	0'30.871		1'55.379	0'30.804		1'58.911	0'31.094		1'55.992	0'30.903		1'55.402	0'30.881		1'55.466	0'30.623	
3 <sup>a</sup> - 1	0'34.444	0'34.444	225.942	0'33.890	0'33.890	225.470	0'35.050	0'35.050	221.766	0'34.857	0'34.857	220.859	0'34.252	0'34.252	225.942	0'34.240	0'34.240	223.603
3 <sup>a</sup> - 2	1'24.880	0'50.436		1'23.863	0'49.973		1'25.773	0'50.723		1'25.722	0'50.865		1'24.112	0'49.860		1'24.371	0'50.131	
3 <sup>a</sup> - 3	1'55.769	0'30.889		1'54.532	0'30.669		1'56.800	0'31.027		1'56.689	0'30.967		1'54.874	0'30.762		1'55.154	0'30.783	
4 <sup>a</sup> - 1	0'34.191	0'34.191	227.849	0'34.037	0'34.037	223.603	0'34.800	0'34.800	221.312	0'34.452	0'34.452	223.603	0'34.170	0'34.170	224.067	0'34.316	0'34.316	230.278
4 <sup>a</sup> - 2	1'30.489	0'56.298		1'23.878	0'49.841		1'26.615	0'51.815		1'25.128	0'50.676		1'24.070	0'49.900		1'27.625	0'53.309	
4 <sup>a</sup> - 3	2'07.641	0'37.152	PIT	1'54.462	0'30.584		1'58.499	0'31.884		1'59.760	0'34.632	PIT	1'56.648	0'32.578	PIT	1'59.501	0'31.876	
5 <sup>a</sup> - 1	6'42.805	6'42.805	174.475	0'35.799	0'35.799	214.712	0'34.809	0'34.809	221.312	6'22.935	6'22.935	190.141	7'33.877	7'33.877	212.599	0'34.139	0'34.139	222.681
5 <sup>a</sup> - 2	7'52.267	1'09.462		1'26.530	0'50.731		1'25.669	0'50.860		7'19.877	0'56.942		8'30.640	0'56.763		1'24.729	0'50.590	
5 <sup>a</sup> - 3	8'25.710	0'33.443		1'59.138	0'32.608	PIT	2'04.205	0'38.536	PIT	7'52.662	0'32.785		9'03.078	0'32.438		1'57.492	0'32.763	PIT
6 <sup>a</sup> - 1	0'34.889	0'34.889	220.859	0'34.733	0'34.733	204.159	2'45.349	2'45.349	147.340	0'35.939	0'35.939	219.960	0'35.754	0'35.754	220.409	4'49.228	4'49.228	215.569
6 <sup>a</sup> - 2	1'28.072	0'53.183		5'52.759	0'51.026		3'40.033	0'54.684		1'27.166	0'51.227		1'26.764	0'51.010		5'42.085	0'52.857	
6 <sup>a</sup> - 3	2'00.019	0'31.947		6'27.034	0'34.275		4'11.429	0'31.396		1'58.017	0'30.851		1'57.383	0'30.619		6'13.778	0'31.693	
7 <sup>a</sup> - 1	0'33.886	0'33.886	223.603	0'33.825	0'33.825	221.766	0'36.665	0'36.665	217.304	0'34.423	0'34.423	220.409	0'33.913	0'33.913	224.067	0'34.308	0'34.308	224.533
7 <sup>a</sup> - 2	1'23.369	0'49.483		1'26.625	0'52.800		1'27.464	0'50.799		1'24.738	0'50.315		1'23.450	0'49.537		1'24.190	0'49.882	
7 <sup>a</sup> - 3	1'54.099	0'30.730		1'57.733	0'31.108		1'58.228	0'30.764		1'57.789	0'33.051		1'54.011	0'30.561		1'54.707	0'30.517	
8 <sup>a</sup> - 1	0'33.774	0'33.774	225.000	0'33.529	0'33.529	223.141	0'34.203	0'34.203	220.859	0'33.870	0'33.870	225.942	0'34.241	0'34.241	223.141	0'33.539	0'33.539	228.330
8 <sup>a</sup> - 2	1'23.397	0'49.623		1'22.739	0'49.210		1'24.468	0'50.265		1'23.614	0'49.744		1'24.059	0'49.818		1'23.782	0'50.243	
8 <sup>a</sup> - 3	1'54.005	0'30.608		1'53.237	0'30.498		1'55.154	0'30.686		1'54.161	0'30.547		1'54.640	0'30.581		1'56.037	0'32.255	
9 <sup>a</sup> - 1	0'38.523	0'38.523	192.514	0'34.839	0'34.839	223.603	0'34.117	0'34.117	221.766	0'34.274	0'34.274	224.067	0'33.919	0'33.919	220.859	0'34.129	0'34.129	225.470
9 <sup>a</sup> - 2	1'32.806	0'54.283		1'25.590	0'50.751		1'24.082	0'49.965		1'23.986	0'49.712		1'23.497	0'49.578		1'24.085	0'49.956	
9 <sup>a</sup> - 3	2'03.643	0'30.837		1'56.084	0'30.494		1'55.034	0'30.952		2'00.274	0'36.288		1'54.045	0'30.548		1'54.587	0'30.502	
10 <sup>a</sup> - 1	0'33.861	0'33.861	221.766	0'33.434	0'33.434	224.533	0'36.335	0'36.335	175.610	0'34.059	0'34.059	223.603	0'34.070	0'34.070	222.681	0'33.972	0'33.972	223.141
10 <sup>a</sup> - 2	1'23.640	0'49.779		1'22.586	0'49.152		1'33.817	0'57.482		1'23.936	0'49.877		1'23.749	0'49.679		1'23.946	0'49.974	
10 <sup>a</sup> - 3	1'54.520	0'30.880		1'53.045	0'30.459		2'04.902	0'31.085		1'54.565	0'30.629		1'54.394	0'30.645		1'54.543	0'30.597	
11 <sup>a</sup> - 1	0'35.920	0'35.920	201.870	0'33.312	0'33.312	224.533	0'34.280	0'34.280	222.681	0'34.240	0'34.240	223.603	0'43.336	0'43.336	187.175	0'33.886	0'33.886	224.533
11 <sup>a</sup> - 2	1'36.007	1'00.087		1'22.947	0'49.635		1'24.664	0'50.384		1'24.335	0'50.095		1'47.963	1'04.627		1'24.063	0'50.177	
11 <sup>a</sup> - 3	2'14.826	0'38.819	PIT	1'53.441	0'30.494		1'55.532	0'30.868		2'00.065	0'35.730	PIT	2'26.611	0'38.648	PIT	1'54.706	0'30.643	
12 <sup>a</sup> - 1				0'37.821	0'37.821	183.051	0'39.075	0'39.075	218.624							0'36.052	0'36.052	183.987
12 <sup>a</sup> - 2				1'31.004	0'53.183		1'35.874	0'56.799								1'31.166	0'55.114	
12 <sup>a</sup> - 3				2'11.416	0'40.412	PIT	2'10.522	0'34.648								2'07.622	0'36.456	PIT
13 <sup>a</sup> - 1							0'35.953	0'35.953	216.001									
13 <sup>a</sup> - 2							1'30.631	0'54.678										
13 <sup>a</sup> - 3							2'07.647	0'37.016	PIT									
14 <sup>a</sup> - 1																		
14 <sup>a</sup> - 2																		
14 <sup>a</sup> - 3																		

Ideal Lap	
0'33.774	0'33.774
1'23.257	0'49.483
1'53.865	0'30.608

Ideal Lap	
0'33.312	0'33.312
1'22.464	0'49.152
1'52.923	0'30.459

Ideal Lap	
0'34.117	0'34.117
1'24.082	0'49.965
1'54.768	0'30.686

Ideal Lap	
0'33.870	0'33.870
1'23.582	0'49.712
1'54.129	0'30.547

Ideal Lap	
0'33.913	0'33.913
1'23.450	0'49.537
1'53.998	0'30.548

Ideal Lap	
0'33.539	0'33.539
1'23.421	0'49.882
1'53.923	0'30.502

Ideal Best Lap	
0'33.312	0'33.312
1'22.464	0'49.152
1'52.826	0'30.362



LAP ANALYSIS Qualifying - 1

On June, 6 - 7  
Silverstone Circuit

Number	8			9			10			15			16			17		
Lap	Lap Time	Partial	Speed	Lap Time	Partial	Speed	Lap Time	Partial	Speed	Lap Time	Partial	Speed	Lap Time	Partial	Speed	Lap Time	Partial	Speed
1 <sup>a</sup> - 1	0'35.193	0'35.193	220.859	0'39.044	0'39.044	116.380	0'35.369	0'35.369	219.513	0'35.437	0'35.437	216.001	0'37.354	0'37.354	220.859	0'35.948	0'35.948	220.859
1 <sup>a</sup> - 2	1'28.122	0'52.929		1'37.742	0'58.698		1'25.878	0'50.509		1'25.863	0'50.426		1'33.667	0'56.313		1'28.668	0'52.720	
1 <sup>a</sup> - 3	2'01.119	0'32.997		2'09.312	0'31.570		1'56.888	0'31.010		1'56.667	0'30.804		2'05.085	0'31.418		2'00.354	0'31.686	
2 <sup>a</sup> - 1	0'51.753	0'51.753	167.442	0'35.728	0'35.728	218.624	0'34.416	0'34.416	219.068	0'34.435	0'34.435	220.409	0'34.512	0'34.512	222.223	0'35.653	0'35.653	219.513
2 <sup>a</sup> - 2	1'49.030	0'57.277		1'26.753	0'51.025		1'24.589	0'50.173		1'24.521	0'50.086		1'24.293	0'49.781		1'28.353	0'52.700	
2 <sup>a</sup> - 3	2'20.164	0'31.134		1'58.003	0'31.250		1'55.387	0'30.798		1'55.241	0'30.720		1'55.096	0'30.803		1'59.955	0'31.602	
3 <sup>a</sup> - 1	0'34.649	0'34.649	224.533	0'35.535	0'35.535	217.742	0'33.717	0'33.717	222.681	0'34.247	0'34.247	220.859	0'33.872	0'33.872	225.470	0'35.721	0'35.721	221.312
3 <sup>a</sup> - 2	1'25.480	0'50.831		1'26.465	0'50.930		1'23.785	0'50.068		1'24.458	0'50.211		1'23.765	0'49.893		1'27.755	0'52.034	
3 <sup>a</sup> - 3	1'56.432	0'30.952		1'57.692	0'31.227		1'54.618	0'30.833		1'55.367	0'30.909		1'54.272	0'30.507		1'59.259	0'31.504	
4 <sup>a</sup> - 1	0'34.369	0'34.369	224.533	0'34.798	0'34.798	219.513	0'33.953	0'33.953	222.223	0'34.265	0'34.265	220.859	0'33.897	0'33.897	225.942	0'38.543	0'38.543	159.293
4 <sup>a</sup> - 2	1'25.498	0'51.129		1'25.603	0'50.805		1'26.275	0'52.322		1'24.297	0'50.032		1'23.672	0'49.775		1'32.057	0'53.514	
4 <sup>a</sup> - 3	1'56.561	0'31.063		1'56.638	0'31.035		1'57.214	0'30.939		1'54.882	0'30.585		1'54.199	0'30.527		2'05.504	0'33.447	PIT
5 <sup>a</sup> - 1	0'37.335	0'37.335	212.181	0'43.038	0'43.038	163.885	0'33.878	0'33.878	221.766	0'34.214	0'34.214	220.859	0'36.950	0'36.950	223.603	3'55.664	3'55.664	198.896
5 <sup>a</sup> - 2	1'29.457	0'52.122		1'35.812	0'52.774		1'24.089	0'50.211		1'25.922	0'51.708		1'27.013	0'50.063		4'56.075	1'00.411	
5 <sup>a</sup> - 3	2'02.965	0'33.508	PIT	2'06.990	0'31.178		1'54.729	0'30.640		2'04.761	0'38.839	PIT	2'00.191	0'33.178	PIT	5'29.334	0'33.259	
6 <sup>a</sup> - 1	6'28.426	6'28.426	171.429	0'34.888	0'34.888	219.960	0'33.906	0'33.906	221.766	3'28.894	3'28.894	207.294	6'09.060	6'09.060	213.862	0'35.536	0'35.536	218.624
6 <sup>a</sup> - 2	7'23.327	0'54.901		1'27.978	0'53.090		1'24.114	0'50.208		4'25.804	0'56.910		7'02.219	0'53.159		1'27.851	0'52.315	
6 <sup>a</sup> - 3	7'54.668	0'31.341		2'05.232	0'37.254	PIT	1'54.820	0'30.706		4'58.787	0'32.983		7'34.281	0'32.062		1'59.250	0'31.399	
7 <sup>a</sup> - 1	0'35.554	0'35.554	182.433	4'10.245	4'10.245	206.897	0'35.220	0'35.220	216.868	0'34.227	0'34.227	221.766	0'35.794	0'35.794	223.141	0'35.415	0'35.415	221.312
7 <sup>a</sup> - 2	1'26.939	0'51.385		5'04.885	0'54.640		1'26.488	0'51.268		1'24.453	0'50.226		1'27.854	0'52.060		1'26.731	0'51.316	
7 <sup>a</sup> - 3	1'58.149	0'31.210		5'36.736	0'31.851		2'00.453	0'33.965	PIT	1'55.147	0'30.694		1'58.897	0'31.043		1'57.689	0'30.958	
8 <sup>a</sup> - 1	0'34.510	0'34.510	225.942	0'36.030	0'36.030	220.859	2'33.261	2'33.261	214.286	0'33.681	0'33.681	221.312	0'33.689	0'33.689	227.369	0'35.181	0'35.181	221.312
8 <sup>a</sup> - 2	1'24.637	0'50.127		1'29.625	0'53.595		3'27.506	0'54.245		1'23.263	0'49.582		1'23.337	0'49.648		1'26.305	0'51.124	
8 <sup>a</sup> - 3	1'55.514	0'30.877		2'00.584	0'30.959		3'58.665	0'31.159		1'53.781	0'30.518		1'53.810	0'30.473		1'57.461	0'31.156	
9 <sup>a</sup> - 1	0'34.445	0'34.445	224.067	0'39.037	0'39.037	223.141	0'34.476	0'34.476	220.409	0'33.998	0'33.998	223.141	0'33.735	0'33.735	225.470	0'35.159	0'35.159	222.223
9 <sup>a</sup> - 2	1'24.546	0'50.101		1'30.315	0'51.278		1'24.486	0'50.010		1'23.854	0'49.856		1'23.227	0'49.492		1'27.333	0'52.174	
9 <sup>a</sup> - 3	1'55.522	0'30.976		2'01.060	0'30.745		1'55.157	0'30.671		1'54.318	0'30.464		1'53.600	0'30.373		1'58.372	0'31.039	
10 <sup>a</sup> - 1	0'34.374	0'34.374	222.681	0'35.144	0'35.144	217.743	0'33.726	0'33.726	222.681	0'33.808	0'33.808	220.859	0'33.907	0'33.907	224.067	0'34.993	0'34.993	222.223
10 <sup>a</sup> - 2	1'24.872	0'50.498		1'25.418	0'50.274		1'23.673	0'49.947		1'26.739	0'52.931		1'23.400	0'49.493		1'26.557	0'51.564	
10 <sup>a</sup> - 3	1'55.834	0'30.962		1'56.145	0'30.727		1'54.211	0'30.538		1'57.932	0'31.193		1'53.762	0'30.362		1'57.700	0'31.143	
11 <sup>a</sup> - 1	0'34.210	0'34.210	223.141	0'34.453	0'34.453	219.513	0'34.211	0'34.211	219.960	0'33.815	0'33.815	220.409	0'37.850	0'37.850	222.681	0'34.925	0'34.925	220.859
11 <sup>a</sup> - 2	1'24.668	0'50.458		1'24.921	0'50.468		1'24.535	0'50.324		1'23.775	0'49.960		1'34.498	0'56.648		1'26.552	0'51.627	
11 <sup>a</sup> - 3	1'55.481	0'30.813		1'55.662	0'30.741		1'55.131	0'30.596		1'54.258	0'30.483		2'15.245	0'40.747	PIT	1'57.798	0'31.246	
12 <sup>a</sup> - 1	0'34.392	0'34.392	225.942	0'43.840	0'43.840	174.194	0'33.931	0'33.931	219.513	0'33.796	0'33.796	220.859				0'34.491	0'34.491	221.312
12 <sup>a</sup> - 2	1'24.677	0'50.285		1'40.293	0'56.453		1'23.928	0'49.997		1'23.723	0'49.927					1'26.102	0'51.611	
12 <sup>a</sup> - 3	1'55.554	0'30.877		2'21.853	0'41.560	PIT	1'54.489	0'30.561		2'02.512	0'38.789	PIT				1'57.783	0'31.681	
13 <sup>a</sup> - 1	0'42.872	0'42.872	191.490				0'33.693	0'33.693	222.223							0'35.394	0'35.394	226.416
13 <sup>a</sup> - 2	1'39.800	0'56.928					1'23.520	0'49.827								1'26.681	0'51.287	
13 <sup>a</sup> - 3	2'18.169	0'38.369	PIT				1'54.062	0'30.542								1'59.412	0'32.731	PIT
14 <sup>a</sup> - 1							0'33.834	0'33.834	222.223									
14 <sup>a</sup> - 2							1'24.039	0'50.205										
14 <sup>a</sup> - 3							2'00.832	0'36.793	PIT									

Ideal Lap	
0'34.210	0'34.210
1'24.311	0'50.101
1'55.124	0'30.813

Ideal Lap	
0'34.453	0'34.453
1'24.727	0'50.274
1'55.454	0'30.727

Ideal Lap	
0'33.693	0'33.693
1'23.520	0'49.827
1'54.058	0'30.538

Ideal Lap	
0'33.681	0'33.681
1'23.263	0'49.582
1'53.727	0'30.464

Ideal Lap	
0'33.689	0'33.689
1'23.181	0'49.492
1'53.543	0'30.362

Ideal Lap	
0'34.491	0'34.491
1'25.615	0'51.124
1'56.573	0'30.958

Ideal Best Lap	
0'33.312	0'33.312
1'22.464	0'49.152
1'52.826	0'30.362



On June, 6 - 7  
Silverstone Circuit

LAP ANALYSIS Qualifying - 1

Number	19			24			30			37			77		
	Lap Time	Partial	Speed	Lap Time	Partial	Speed	Lap Time	Partial	Speed	Lap Time	Partial	Speed	Lap Time	Partial	Speed
1 <sup>a</sup> - 1	0'34.562	0'34.562	223.141	0'35.527	0'35.527	219.067	0'34.723	0'34.723	219.067	0'35.091	0'35.091	219.960	0'34.694	0'34.694	220.409
1 <sup>a</sup> - 2	1'24.963	0'50.401		1'26.869	0'51.342		1'25.578	0'50.855		1'27.242	0'52.151		1'25.138	0'50.444	
1 <sup>a</sup> - 3	1'56.112	0'31.149		1'58.198	0'31.329		1'56.596	0'31.018		2'00.692	0'33.450		1'56.198	0'31.060	
2 <sup>a</sup> - 1	0'34.409	0'34.409	222.681	0'34.935	0'34.935	217.304	0'34.113	0'34.113	219.067	0'34.698	0'34.698	218.624	0'34.192	0'34.192	221.766
2 <sup>a</sup> - 2	1'24.616	0'50.207		1'26.229	0'51.294		1'23.925	0'49.812		1'24.815	0'50.117		1'24.350	0'50.158	
2 <sup>a</sup> - 3	1'55.788	0'31.172		1'57.387	0'31.158		1'54.882	0'30.957		1'55.653	0'30.838		1'55.097	0'30.747	
3 <sup>a</sup> - 1	0'34.179	0'34.179	225.942	0'34.870	0'34.870	219.960	0'34.022	0'34.022	222.681	0'33.967	0'33.967	223.603	0'33.841	0'33.841	223.603
3 <sup>a</sup> - 2				1'26.021	0'51.151		1'25.430	0'51.408		1'24.392	0'50.425		1'23.621	0'49.780	
3 <sup>a</sup> - 3				1'58.290	0'32.269		1'59.191	0'33.761		1'55.296	0'30.904		1'54.295	0'30.674	
4 <sup>a</sup> - 1				0'34.784	0'34.784	219.067	0'34.177	0'34.177	222.681	0'33.879	0'33.879	222.681	0'34.283	0'34.283	221.312
4 <sup>a</sup> - 2				1'25.500	0'50.716		1'25.226	0'51.049		1'24.110	0'50.231		1'28.953	0'54.670	
4 <sup>a</sup> - 3				1'56.563	0'31.063		2'02.493	0'37.267	PIT	1'55.020	0'30.910		2'04.274	0'35.321	PIT
5 <sup>a</sup> - 1				0'34.701	0'34.701	220.409	5'28.668	5'28.668	211.765	0'34.171	0'34.171	223.603	5'33.069	5'33.069	180.905
5 <sup>a</sup> - 2				1'25.417	0'50.716		6'21.461	0'52.793		1'26.874	0'52.703		6'29.548	0'56.479	
5 <sup>a</sup> - 3				1'56.506	0'31.089		6'53.052	0'31.591		2'00.900	0'34.026	PIT	7'02.732	0'33.184	
6 <sup>a</sup> - 1				0'34.384	0'34.384	219.513	0'33.851	0'33.851	221.766	5'09.320	5'09.320	156.749	0'33.865	0'33.865	221.312
6 <sup>a</sup> - 2				1'24.888	0'50.504		1'23.303	0'49.452		6'14.649	1'05.329		1'23.624	0'49.759	
6 <sup>a</sup> - 3				1'55.777	0'30.889		1'53.920	0'30.617		6'46.815	0'32.166		1'54.295	0'30.671	
7 <sup>a</sup> - 1				0'34.349	0'34.349	219.513	0'33.711	0'33.711	222.681	0'34.483	0'34.483	222.681	0'33.472	0'33.472	222.681
7 <sup>a</sup> - 2				1'24.673	0'50.414		1'23.065	0'49.354		1'24.267	0'49.784		1'23.078	0'49.606	
7 <sup>a</sup> - 3				1'55.850	0'31.087		1'53.767	0'30.702		1'54.675	0'30.408		1'53.582	0'30.504	
8 <sup>a</sup> - 1				0'34.823	0'34.823	218.182	0'33.782	0'33.782	222.223	0'33.559	0'33.559	224.067	0'33.590	0'33.590	224.533
8 <sup>a</sup> - 2				1'25.975	0'51.152		1'39.624	1'05.842		1'23.278	0'49.719		1'23.329	0'49.739	
8 <sup>a</sup> - 3				2'00.832	0'34.857	PIT	2'12.536	0'32.912		1'53.768	0'30.490		1'54.020	0'30.691	
9 <sup>a</sup> - 1				2'30.008	2'30.008	212.599	0'38.837	0'38.837	176.183	0'33.871	0'33.871	224.067	0'39.480	0'39.480	220.859
9 <sup>a</sup> - 2				3'21.277	0'51.269		1'34.277	0'55.440		1'23.931	0'50.060		1'37.657	0'58.177	
9 <sup>a</sup> - 3				3'52.146	0'30.869		2'05.537	0'31.260		1'54.730	0'30.799		2'10.316	0'32.659	
10 <sup>a</sup> - 1				0'34.705	0'34.705	217.304	0'33.853	0'33.853	219.960	0'37.286	0'37.286	161.435	0'33.742	0'33.742	221.766
10 <sup>a</sup> - 2				1'24.948	0'50.243		1'24.926	0'51.073		1'37.055	0'59.769		1'23.475	0'49.733	
10 <sup>a</sup> - 3				1'55.642	0'30.694		2'11.325	0'46.399	PIT	2'08.268	0'31.213		1'57.241	0'33.766	PIT
11 <sup>a</sup> - 1				0'33.974	0'33.974	221.312				0'33.921	0'33.921	222.223			
11 <sup>a</sup> - 2				1'23.937	0'49.963					1'23.786	0'49.865				
11 <sup>a</sup> - 3				1'59.114	0'35.177					1'54.625	0'30.839				
12 <sup>a</sup> - 1				0'34.365	0'34.365	218.182				0'40.681	0'40.681	188.482			
12 <sup>a</sup> - 2				1'26.231	0'51.866					1'43.738	1'03.057				
12 <sup>a</sup> - 3				1'57.491	0'31.260					2'25.686	0'41.948	PIT			
13 <sup>a</sup> - 1				0'35.807	0'35.807	183.987									
13 <sup>a</sup> - 2				1'32.076	0'56.269										
13 <sup>a</sup> - 3				2'12.614	0'40.538	PIT									
14 <sup>a</sup> - 1															
14 <sup>a</sup> - 2															
14 <sup>a</sup> - 3															

Ideal Lap	
0'34.179	0'34.179
1'24.386	0'50.207
1'55.535	0'31.149

Ideal Lap	
0'33.974	0'33.974
1'23.937	0'49.963
1'54.631	0'30.694

Ideal Lap	
0'33.711	0'33.711
1'23.065	0'49.354
1'53.682	0'30.617

Ideal Lap	
0'33.559	0'33.559
1'23.278	0'49.719
1'53.686	0'30.408

Ideal Lap	
0'33.472	0'33.472
1'23.078	0'49.606
1'53.582	0'30.504

Ideal Best Lap	
0'33.312	0'33.312
1'22.464	0'49.152
1'52.826	0'30.362





Real Federación Española  
de Automovilismo



**SILVERSTONE**

Experience is everything

Silverstone Circuit

On June, 6 - 7

**Qualifying - 1 Sectors Results**

Sector - 1				Sector - 2				Sector - 3				Ideal Lap vs Best Lap				
Ord.	Nº Driver	Time		Nº Driver	Time			Nº Driver	Time			Ord.	Nº Driver	Ideal Lap	Best Lap	Ord.
1	3 Vitor Baptista	33.312		3 Vitor Baptista	49.152			16 Yu Kanamaru	30.362			1	3 Vitor Baptista	1'52.923	1'53.045	1
2	77 Leonardo Pulcini	33.472		30 Alessio Rovera	49.354			37 Igor Walilko	30.408			2	16 Yu Kanamaru	1'53.543	1'53.600	3
3	7 Diego Menchaca	33.539		1 Andres Saravia	49.483			3 Vitor Baptista	30.459			3	77 Leonardo Pulcini	1'53.582	1'53.582	2
4	37 Igor Walilko	33.559		16 Yu Kanamaru	49.492			15 Tanart Sathienthirakul	30.464			4	30 Alessio Rovera	1'53.682	1'53.767	4
5	15 Tanart Sathienthirakul	33.681		6 Konstantin Tereschenko	49.537			7 Diego Menchaca	30.502			5	37 Igor Walilko	1'53.686	1'53.768	5
6	16 Yu Kanamaru	33.689		15 Tanart Sathienthirakul	49.582			77 Leonardo Pulcini	30.504			6	15 Tanart Sathienthirakul	1'53.727	1'53.781	6
7	10 Yarin Stern	33.693		77 Leonardo Pulcini	49.606			10 Yarin Stern	30.538			7	1 Andres Saravia	1'53.865	1'54.005	7
8	30 Alessio Rovera	33.711		5 Damiano Fioravanti	49.712			5 Damiano Fioravanti	30.547			8	7 Diego Menchaca	1'53.923	1'54.543	11
9	1 Andres Saravia	33.774		37 Igor Walilko	49.719			6 Konstantin Tereschenko	30.548			9	6 Konstantin Tereschenko	1'53.998	1'54.011	8
10	5 Damiano Fioravanti	33.870		10 Yarin Stern	49.827			1 Andres Saravia	30.608			10	10 Yarin Stern	1'54.058	1'54.062	9
11	6 Konstantin Tereschenko	33.913		7 Diego Menchaca	49.882			30 Alessio Rovera	30.617			11	5 Damiano Fioravanti	1'54.129	1'54.161	10
12	24 Alexey Chuklin	33.974		24 Alexey Chuklin	49.963			4 Antoni Ptak	30.686			12	24 Alexey Chuklin	1'54.631	1'55.642	14
13	4 Antoni Ptak	34.117		4 Antoni Ptak	49.965			24 Alexey Chuklin	30.694			13	4 Antoni Ptak	1'54.768	1'55.034	12
14	19 William Barbosa	34.179		8 Henrique Baptista	50.101			9 Ahmad Al Ghanem	30.727			14	8 Henrique Baptista	1'55.124	1'55.481	13
15	8 Henrique Baptista	34.210		19 William Barbosa	50.207			8 Henrique Baptista	30.813			15	9 Ahmad Al Ghanem	1'55.454	1'55.662	15
16	9 Ahmad Al Ghanem	34.453		9 Ahmad Al Ghanem	50.274			17 Jose Manuel Vilalta	30.958			16	19 William Barbosa	1'55.535	1'55.788	16
17	17 Jose Manuel Vilalta	34.491		17 Jose Manuel Vilalta	51.124			19 William Barbosa	31.149			17	17 Jose Manuel Vilalta	1'56.573	1'57.461	17



Santisima Trinidad 30 28010 MADRID

Tel y Fax 91.448.32.06

www.cronococa.com

e-mail: info@cronococa.com



Juan Bravo 17 28006 MADRID

Tel 91.432.27.50

www.gtssport.es

e-mail: info@gtssport.es

Silverstone Circuit

On June, 6 - 7

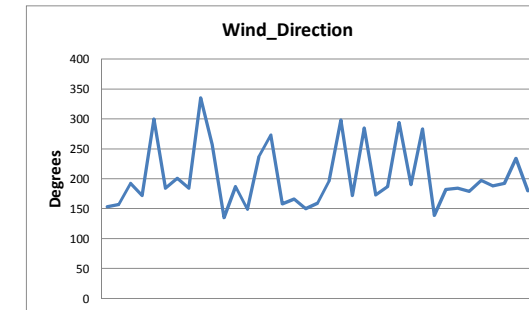
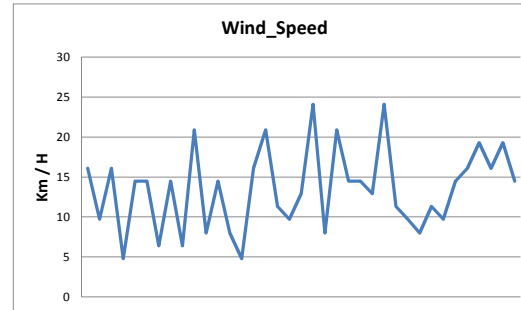
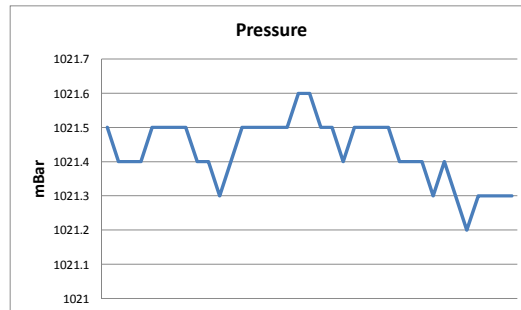
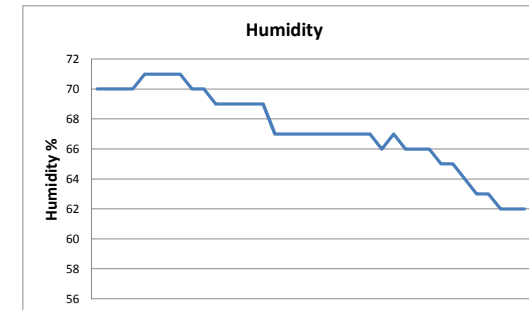
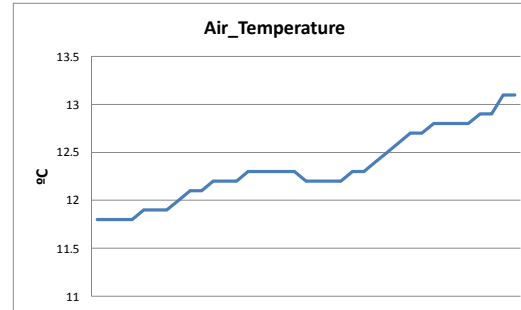
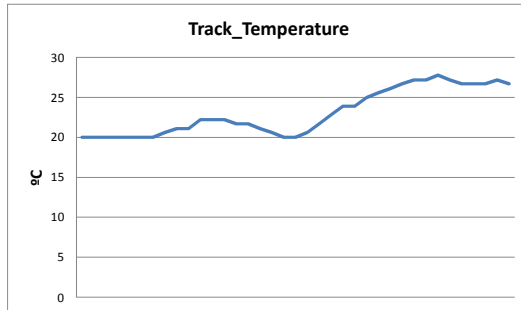
**Qualifying - 1 MAXIMUM SPEED**

Ord.	Nº	Entrant	Nat.	Driver	Nat.	Cat.	Cla.	Chassis	Team	Km/h
1	7	Campos Racing	MEX	Diego Menchaca	MEX	R	1º	Dallara F312	Campos Racing	230.278
2	1	RP Motorsport	GTM	Andres Saravia	GTM			Dallara F312	RP Motorsport	227.849
3	16	RACE	JPN	Yu Kanamaru	JPN			Dallara F312	E. de Villota Motorsport	227.369
4	17	RACE	MEX	Jose Manuel Vilalta	MEX	R	2º	Dallara F312	E. de Villota Motorsport	226.416
5	3	RP Motorsport	BRA	Vitor Baptista	BRA			Dallara F312	RP Motorsport	225.942
6	5	RP Motorsport	ITA	Damiano Fioravanti	ITA			Dallara F312	RP Motorsport	225.942
7	6	Campos Racing	RUS	Konstantin Tereschenko	RUS			Dallara F312	Campos Racing	225.942
8	8	Campos Racing	BRA	Henrique Baptista	BRA			Dallara F312	Campos Racing	225.942
9	19	BVM Racing	COL	William Barbosa	COL			Dallara F312	BVM Racing	225.942
10	77	DAV Racing	ITA	Leonardo Pulcini	ITA	R	3º	Dallara F312	DAV Racing	224.533
11	37	RP Motorsport	POL	Igor Walilko	POL	R	4º	Dallara F312	RP Motorsport	224.067
12	9	Campos Racing	KWT	Ahmad Al Ghanem	KWT	R	5º	Dallara F312	Campos Racing	223.141
13	15	Motul Team West-Tec F3	THA	Tanart Sathienthirakul	THA			Dallara F312	Team West-Tec F3	223.141
14	4	RP Motorsport	POL	Antoni Ptak	POL	R	6º	Dallara F312	RP Motorsport	222.681
15	10	Motul Team West-Tec F3	ISR	Yarin Stern	ISR			Dallara F312	Team West-Tec F3	222.681
16	30	BVM Racing	ITA	Alessio Rovera	ITA	R	7º	Dallara F312	BVM Racing	222.681
17	24	Corbetta Competizioni	RUS	Alexey Chuklin	RUS			Dallara F312	Corbetta Competizioni	221.312

**WEATHER REPORT Qualifying - 1**

Silverstone Circuit  
On June, 6 - 7


Track Status





**RACE - 1 STARTING GRID**

Num.	Driver	Time	Row	Num.	Driver	Time
19	William Barbosa	1'55.788	..... 8 .....	17	Jose Manuel Vilalta	1'57.461
24	Alexey Chuklin	1'55.642	..... 7 .....	9	Ahmad Al Ghanem	1'55.662
4	Antoni Ptak	1'55.034	..... 6 .....	8	Henrique Baptista	1'55.481
5	Damiano Fioravanti	1'54.161	..... 5 .....	7	Diego Menchaca	1'54.543
6	Konstantin Tereschenko	1'54.011	..... 4 .....	10	Yarin Stern	1'54.062
15	Tanart Sathienthirakul	1'53.781	..... 3 .....	1	Andres Saravia	1'54.005
30	Alessio Rovera	1'53.767	..... 2 .....	37	Igor Walilko	1'53.768
77	Leonardo Pulcini	1'53.582	..... 1 .....	16	Yu Kanamaru	1'53.600
				3	Vitor Baptista	1'53.045

STEWARDS

TIMEKEEPER

